

Seroprevalence of SARS-CoV-2-specific antibodies among Australian blood donors: Supplementary materials

3 November 2022

Purpose of this document

The Australian COVID-19 Serosurveillance Network is conducting regular serological surveys among Australian blood donors (aged 18 years and older) to study prevalence of antibodies to SARS-CoV-2 in Australia. The surveys are being conducted every 13 weeks (approximately), with three rounds completed to date:

- [Round 1: 23 February – 3 March 2022](#)
- [Round 2: 9 June – 18 June 2022](#)
- [Round 3: 23 August – 2 September 2022](#)
- Round 4: Scheduled for December 2022

This document contains information on survey populations for each round and all results in table format.

Key contributors

- **The Kirby Institute, University of New South Wales (UNSW):** Dorothy Machalek, Eithandee Aung, John Kaldor
- **National Centre Immunisation Research and Surveillance (NCIRS):** Noni Winkler, Heather Gidding, Kristine Macartney
- **Australian Red Cross Lifeblood:** Rena Hirani, Perfecto Diaz, Mark Sombillo, Sue Ismay, Haydon Maas, Kirsty Pevitt, Katrina Smith, Iain Gosbell, David Irving
- **Victorian Infectious Diseases Reference Laboratory (VIDRL):** Suellen Nicholson, Theo Karapanagiotidis, Rianne Brizuela, Natalie Cain, Han Huang, Karla Hernandez, Deborah Williamson
- **NSW Health Pathology, Institute of Clinical Pathology And Medical Research (ICPMR):** Matthew O'Sullivan
- **Murdoch Children's Research Institute (MCRI):** John Carlin, Marnie Downes, Prisha Balgovind

Funding

The work was funded by the SNOW Medical Foundation and the Australian Government Department of Health and Aged Care. Australian governments fund Australian Red Cross Lifeblood for the provision of blood, blood products and services to the Australian community.

Table of Contents

1. Anti-spike protein seroprevalence	3
Round 1: By jurisdiction, age group, and sex	3
Round 2: By jurisdiction, age group, and sex	4
Round 3: By jurisdiction, age group, and sex	5
2. Anti-nucleocapsid protein seroprevalence	6
Round 1: By jurisdiction, age group, and sex	6
Round 2: By jurisdiction, age group, and sex	7
Round 3: By jurisdiction, age group, and sex	8
3. Demographic characteristics of study populations	9
Distribution by jurisdiction, age group, and sex	9
Distribution by Statistical Area Level 4 in Victoria.....	10
Distribution by Statistical Area Level 4 in New South Wales	11
Distribution by Statistical Area Level 4 in Queensland	12
Distribution by Statistical Area Level 4 in Western Australia	13
Distribution by Statistical Area Level 4 in South Australia, Tasmania, and Northern Territory	14

1. Spike antibody seroprevalence

Table 1. Crude SARS-CoV-2 spike antibody seroprevalence among Australian blood donors by jurisdiction, age group and sex, 23 February – 3 March 2022 (Round 1)

	Overall n/N (%; 95% CI)	Victoria n/N (%; 95% CI)	NSW n/N (%; 95% CI)	Queensland n/N (%; 95% CI)	WA n/N (%; 95% CI)	SA n/N (%; 95% CI)	Tasmania n/N (%; 95% CI)	NT n/N (%; 95% CI)	ACT n/N (%; 95% CI)
Overall	5089/5185 (98.1; 97.7–98.5)	1086/1099 (98.8; 98.0–99.4)	1136/1155 (98.4; 97.4–99.0)	1095/1135 (96.5; 95.2–97.5)	983/999 (98.4; 97.4–99.1)	202/205 (98.5; 95.8–99.7)	214/216 (99.1; 96.7–99.9)	196/199 (98.5; 95.7–99.7)	177/177 (100; 97.9–100)
Age group (years)									
18–29	1147/1160 (98.9; 98.1–99.4)	228/228 (100; 98.4–100)	257/260 (98.8; 96.7–99.8)	288/292 (98.6; 96.5–99.6)	205/210 (97.6; 94.5–99.2)	37/38 (97.4; 86.2–99.9)	30/30 (100; 88.4–100)	51/51 (100; 93.0–100)	51/51 (100; 93.0–100)
30–39	973/993 (98.0; 96.9–98.8)	196/200 (98.0; 95.0–99.5)	233/235 (99.1; 97.0–99.9)	207/215 (96.3; 92.8–98.4)	199/203 (98.0; 95.0–99.5)	25/26 (96.2; 80.4–99.9)	39/39 (100; 91.0–100)	49/50 (98.0; 89.4–99.9)	25/25 (100; 86.3–100)
40–49	871/895 (97.3; 96.0–98.3)	201/202 (99.5; 97.3–100)	193/202 (95.5; 91.7–97.9)	182/190 (95.8; 91.9–98.2)	183/187 (97.9; 94.6–99.4)	25/25 (100; 86.3–100)	32/33 (97.0; 84.2–99.9)	18/19 (94.7; 74.0–99.9)	37/37 (100; 90.5–100)
50–59	951/972 (97.8; 96.7–98.7)	218/223 (97.8; 94.8–99.3)	188/189 (99.5; 97.1–100)	198/211 (93.8; 89.7–96.7)	183/184 (99.5; 97.0–100)	49/49 (100; 92.7–100)	49/50 (98.0; 89.4–99.9)	38/38 (100; 90.7–100)	28/28 (100; 87.7–100)
60–69	838/852 (98.4; 97.3–99.1)	180/183 (98.4; 95.3–99.7)	190/192 (99.0; 96.3–99.9)	163/168 (97.0; 93.2–99.0)	153/155 (98.7; 95.4–99.8)	51/52 (98.1; 89.7–100)	46/46 (100; 92.3–100)	33/34 (97.1; 84.7–99.9)	22/22 (100; 84.6–100)
70–89	309/313 (98.7; 96.8–99.7)	63/63 (100; 94.3–100)	75/77 (97.4; 90.9–99.7)	57/59 (96.6; 88.3–99.6)	60/60 (100; 94.0–100)	15/15 (100; 78.2–100)	18/18 (100; 81.5–100)	7/7 (100; 59.0–100)	14/14 (100; 76.8–100)
Sex									
Male	2955/3017 (97.9; 97.4–98.4)	625/634 (98.6; 97.3–99.3)	635/646 (98.3; 97.0–99.1)	667/696 (95.8; 94.1–97.2)	604/611 (98.9; 97.7–99.5)	123/126 (97.6; 93.2–99.5)	102/104 (98.1; 93.2–99.8)	103/104 (99.0; 94.8–100)	96/96 (100; 96.2–100)
Female	2134/2168 (98.4; 97.8–98.9)	461/465 (99.1; 97.8–99.8)	501/509 (98.4; 96.9–99.3)	428/439 (97.5; 95.6–98.7)	379/388 (97.7; 95.6–98.9)	79/79 (100; 95.4–100)	112/112 (100; 96.8–100)	93/95 (97.9; 92.6–99.7)	81/81 (100; 95.5–100)

Table 2. Crude SARS-CoV-2 spike antibody seroprevalence among Australian blood donors, by jurisdiction, age group and sex, 9 June – 18 June 2022 (Round 2)

	Overall n/N (%; 95% CI)	Victoria n/N (%; 95% CI)	NSW n/N (%; 95% CI)	Queensland n/N (%; 95% CI)	WA n/N (%; 95% CI)	SA n/N (%; 95% CI)	Tasmania n/N (%; 95% CI)	NT n/N (%; 95% CI)	ACT n/N (%; 95% CI)
Overall	5086/5139 (99.0; 98.7–99.2)	1028/1035 (99.3; 98.6–99.7)	1214/1226 (99.0; 98.3–99.5)	1128/1226 (98.5; 97.6–99.1)	971/982 (98.9; 98.0–99.4)	209/210 (99.5; 97.4–100)	199/203 (98.0; 95.0–99.5)	173/174 (99.4; 96.8–100)	164/164 (100; 97.8–100)
Age group (years)									
18–29	1122/ 1127 (99.6; 99.0–99.9)	236/ 237 (99.6; 97.7–100)	304/ 305 (99.7; 96.7–99.8)	253/254 (99.6; 97.8–100)	190/191 (99.5; 97.1–100)	36/36 (100; 90.3–100)	26/27 (96.3; 91.0–99.9)	36/36 (100; 93.0–100)	41/41 (100; 91.4–100)
30–39	1046/ 1056 (99.1; 98.3–99.5)	214/ 214 (100; 98.3–100)	243/248 (98.0; 95.4–99.3)	230/233 (98.7; 96.3–99.7)	211/213 (99.1; 96.6–99.9)	40/40 (100; 91.2–100)	40/40 (100; 91.2–100)	41/41 (100; 91.4–100)	27/27 (100; 87.2–100)
40–49	903/ 914 (98.8; 97.9–99.4)	166/ 167 (99.4; 96.7–100)	203/203 (100; 98.2–100)	191/195 (97.9; 94.8–99.4)	198/202 (98.0; 95.0–99.5)	35/35 (100; 90.0–100)	29/31 (93.6; 78.6–99.2)	46/46 (100; 92.3–100)	35/35 (100; 90.0–100)
50–59	982/ 993 (98.9; 98.0–99.4)	199/ 203 (98.0; 95.0–99.5)	209/211 (99.1; 96.6–100)	244/244 (100; 98.5–100)	196/198 (99.0; 96.4–99.9)	39/40 (97.5; 86.6–99.9)	39/40 (97.5; 86.8–99.9)	23/24 (95.8; 78.9–99.9)	33/33 (100; 89.4–100)
60–69	772/ 781 (98.8; 97.8–99.5)	168/ 169 (99.4; 96.7–100.0)	197/198 (99.5; 97.2–100)	151/158 (95.6; 91.1–98.2)	128/128 (100; 97.2–100)	37/37 (100; 90.5–100)	48/48 (100; 92.6–100)	20/20 (100; 83.2–100)	23/23 (100; 85.2–100)
70–89	261/ 268 (97.4; 94.7–98.9)	45/45 (100; 92.1–100)	58/61 (95.1; 86.3–99.5)	59/61 (96.7; 88.7–99.6)	60/60 (96.0; 86.3–99.5)	22/22 (100; 84.6–100)	17/17 (100; 80.5–100)	7/7 (100; 59.0–100)	5/5 (100; 47.8–100)
Sex									
Male	2839/2876 (98.7; 98.2–99.1)	556/561 (99.1; 97.9–99.7)	657/667 (98.5; 97.3–99.3)	656/670 (97.9; 96.5–98.9)	569/574 (99.1; 98.0–99.7)	114/115 (99.1; 95.3–100)	110/112 (98.2; 93.7–99.8)	92/92 (100; 96.1–100)	85/85 (100; 95.8–100)
Female	2247/2263 (99.3; 98.9–99.6)	472/474 (99.6; 98.5–99.9)	557/559 (99.6; 98.7–100)	472/475 (99.4; 98.2–99.9)	402/408 (98.5; 96.8–99.5)	95/95 (100; 96.2–100)	89/91 (97.8; 92.3–99.7)	81/82 (98.8; 93.4–100)	79/79 (100; 95.4–100)

Table 3. Crude SARS-CoV-2 spike antibody seroprevalence among Australian blood donors, by jurisdiction, age group and sex, 23 August – 2 September 2022 (Round 3)

	Overall n/N (%; 95% CI)	Victoria n/N (%; 95% CI)	NSW n/N (%; 95% CI)	Queensland n/N (%; 95% CI)	WA n/N (%; 95% CI)	SA n/N (%; 95% CI)	Tasmania n/N (%; 95% CI)	NT n/N (%; 95% CI)	ACT n/N (%; 95% CI)
Overall	4983/5005 (99.6; 99.3–99.7)	1102/1105 (99.7; 99.2–99.9)	1180/1185 (99.6; 99.0–99.8)	956/960 (99.6; 99.8–99.9)	989/996 (99.3; 98.5–99.7)	205/206 (99.5; 96.6–99.9)	200/202 (99.0; 96.1–99.8)	186/186 (100; 98.0–100)	165/165 (100; 97.8–100)
Age group (years)									
18–29	911/ 911 (100; 99.6–100)	227/ 227 (100; 98.4–100)	248/ 248 (100; 98.5–99.8)	173/173 (100; 97.9–100)	136/136 (100; 97.3–100)	23/23 (100; 85.2–100)	30/30 (100; 88.4–100)	39/39 (100; 91.0–100)	35/35 (100; 90.0–100)
30–39	903/ 904 (99.9; 99.2–100)	184/ 184 (100; 98.0–100)	208/208 (100; 98.2–99.3)	166/166 (100; 97.8–100)	200/201 (99.5; 96.6–99.9)	36/36 (100; 90.3–100)	33/33 (100; 89.4–100)	47/47 (100; 92.5–100)	29/29 (100; 88.1–100)
40–49	963/ 970 (99.3; 98.5–99.7)	204/ 205 (99.5; 96.6–99.9)	219/220 (99.6; 96.8–100)	212/213 (99.5; 96.7–99.5)	198/201 (98.5; 95.5–99.5)	32/32 (100; 89.1–100)	29/30 (96.7; 79.6–99.5)	26/26 (100; 86.7–100)	43/43 (100; 91.8–100)
50–59	1089/ 1097 (99.3; 98.6–99.6)	232/ 233 (99.6; 97.0–99.9)	248/250 (99.2; 96.9–100)	235/237 (99.2; 96.7–99.2)	214/216 (99.1; 96.4–99.8)	52/52 (100; 93.2–100)	40/41 (97.6; 84.5–99.7)	38/38 (100; 90.7–100)	30/30 (100; 88.4–100)
60–69	837/ 839 (99.8; 99.1–99.9)	203/ 203 (100; 98.2–100.0)	180/180 (100; 98.0–100)	144/145 (99.3; 95.3–99.3)	168/168 (100; 97.8–100)	44/45 (97.8; 85.7–99.7)	48/48 (100; 92.3–100)	32/32 (100; 89.1–100)	18/18 (100; 81.5–100)
70–89	280/ 284 (98.6; 96.3–99.5)	52/53 (98.1; 87.8–99.7)	77/79 (97.5; 90.4–99.4)	26/26 (100; 86.8–100)	73/74 (98.7; 99.8–91.0)	18/18 (100; 81.5–100)	20/20 (100; 83.2–100)	4/4 (100; 39.8–100)	10/10 (100; 69.2–100)
Sex									
Male	2784/2796 (99.6; 99.3–99.8)	622/625 (99.5; 98.5–99.9)	679/682 (99.6; 98.6–99.9)	532/534 (99.6; 98.5–99.9)	557/561 (99.3; 98.1–99.7)	105/105 (100; 96.5–100)	110/110 (100; 96.7–100)	95/95 (100; 96.2–100)	84/84 (100; 95.7–100)
Female	2199/2209 (99.6; 99.2–99.8)	480/480 (100; 99.2–100)	501/503 (99.6; 98.4–99.9)	424/426 (99.5; 98.1–99.9)	432/435 (98.3; 97.9–99.8)	100/101 (99.0; 93.2–99.9)	90/92 (97.8; 91.7–99.5)	91/91 (100; 96.0–100)	81/81 (100; 95.5–100)

2. Nucleocapsid antibody seroprevalence

Table 4. Crude SARS-CoV-2 nucleocapsid antibody seroprevalence among Australian blood donors, by jurisdiction, age group and sex, 23 February – 3 March 2022 (Round 1)

	Overall n/N (%; 95% CI)	Victoria n/N (%; 95% CI)	NSW n/N (%; 95% CI)	Queensland n/N (%; 95% CI)	WA n/N (%; 95% CI)	SA n/N (%; 95% CI)	Tasmania n/N (%; 95% CI)	NT n/N (%; 95% CI)	ACT n/N (%; 95% CI)
Overall	881/5185 (17.0; 16.0–18.0)	248/1099 (22.6; 20.1–25.2)	247/1155 (21.4; 19.1–23.9)	293/1135 (25.8; 23.3–28.5)	5/999 (0.5; 0.2–1.2)	21/205 (10.2; 6.5–15.2)	13/216 (6.0; 3.2–10.1)	29/199 (14.6; 10.0–20.3)	25/177 (14.1; 9.4–20.1)
Age group (years)									
18–29	315/1160 (27.2; 24.6–29.8)	78/228 (34.2; 28.1–40.8)	74/260 (28.5; 23.1–34.4)	123/292 (42.1; 36.4–48.0)	2/210 (1.0; 0.1–3.4)	8/38 (21.1; 9.6–37.3)	7/30 (23.3; 9.9–42.3)	11/51 (21.6; 11.3–35.3)	12/51 (23.5; 12.8–37.5)
30–39	215/993 (21.7; 19.1–24.3)	50/200 (25.0; 19.2–31.6)	72/235 (30.6; 24.8–37.0)	64/215 (29.8; 23.7–36.4)	2/203 (1.0; 0.1–3.5)	3/26 (11.5; 2.4–30.2)	3/39 (7.7; 1.6–20.9)	16/50 (32.0; 19.5–46.7)	5/25 (20.0; 6.8–40.7)
40–49	144/895 (16.1; 13.7–18.7)	42/202 (20.8; 15.4–27.0)	48/202 (23.8; 18.1–30.2)	45/190 (23.7; 17.8–30.4)	1/187 (0.5; 0–2.9)	3/25 (12.0; 2.5–31.2)	0/33 (0; 0–10.6)	0/19 (0; 0–17.6)	5/37 (13.5; 4.5–28.8)
50–59	116/972 (11.9; 10.0–14.1)	41/223 (18.4; 13.5–24.1)	30/189 (15.9; 11.0–21.9)	36/211 (17.1; 12.2–22.8)	0/184 (0; 0–2.0)	4/49 (8.2; 2.3–19.6)	2/50 (4.0; 0.5–13.7)	1/38 (2.6; 0.1–13.8)	2/28 (7.1; 0.9–22.8)
60–69	71/852 (8.3; 6.6–10.4)	30/183 (16.4; 11.3–22.6)	19/192 (9.9; 6.1–15.0)	19/168 (11.3; 6.9–17.1)	0/155 (0; 0–2.4)	1/52 (1.9; 2.3–19.6)	0/46 (0; 0–7.7)	1/34 (2.9; 0.1–15.3)	1/22 (4.5; 0.1–22.8)
70–89	20/313 (6.4; 3.9–9.7)	7/63 (11.1; 4.6–21.6)	4/77 (5.2; 1.4–12.8)	6/59 (10.2; 3.8–20.8)	0/60 (0; 0–6.0)	2/15 (13.3; 1.7–40.5)	1/18 (5.6; 0.1–27.3)	0/7 (0; 0–41.0)	0/14 (0; 0–23.2)
Sex									
Male	499/3017 (16.5; 15.2–17.9)	143/634 (22.6; 19.4–26.0)	134/646 (20.7; 17.7–24.1)	170/696 (24.4; 21.3–27.8)	4/611 (0.7; 0.2–1.7)	13/126 (10.3; 5.6–17.0)	4/104 (3.8; 1.1–9.6)	14/104 (13.5; 7.6–21.6)	17/96 (17.7; 10.7–26.8)
Female	382/2168 (17.6; 16.0–19.3)	105/465 (22.6; 18.9–26.7)	113/509 (22.2; 18.7–26.1)	123/439 (28.0; 23.9–32.5)	1/388 (0.3; 0–1.4)	8/79 (10.1; 4.5–19.0)	9/112 (8.0; 3.7–14.7)	15/95 (15.8; 9.1–24.7)	8/81 (9.9; 4.4–18.5)

Table 5. Crude SARS-CoV-2 nucleocapsid antibody seroprevalence among Australian blood donors, by jurisdiction, age group and sex, 9 June – 18 June 2022 (Round 2)

	Overall n/N (%; 95% CI)	Victoria n/N (%; 95% CI)	NSW n/N (%; 95% CI)	Queensland n/N (%; 95% CI)	WA n/N (%; 95% CI)	SA n/N (%; 95% CI)	Tasmania n/N (%; 95% CI)	NT n/N (%; 95% CI)	ACT n/N (%; 95% CI)
Overall	2375/5139 (46.2; 44.8–47.6)	513/ 1,035 (49.6; 46.5–52.7)	611/1226 (49.8; 47.0–52.7)	560/1145 (48.9; 46.0–51.8)	368/982 (37.5; 34.4–40.6)	88/210 (41.9; 35.2–48.9)	81/203 (39.9; 33.1–47.0)	80/174 (46.0; 38.4–53.7)	74/164 (45.1; 37.4–53.1)
Age group (years)									
18–29	695/ 1127 (61.7; 58.8–64.5)	164/237 (69.2; 62.9–75.0)	196/ 305 (64.3; 58.6–69.6)	161/254 (63.4; 57.1–69.3)	91/191 (47.6; 40.4–55.0)	19/36 (52.8; 35.5–69.6)	16/27 (59.3; 38.8–77.6)	27/36 (75.0; 57.8–87.9)	21/41 (51.2; 35.1–67.1)
30–39	555/1056 (52.6; 49.5–55.6)	122/214 (57.0; 50.1–63.7)	133/248 (53.6; 47.2–60.0)	128/233 (54.9; 48.3–61.4)	97/213 (45.5; 38.7–52.5)	23/40 (57.5; 40.9–73.0)	23/40 (57.5; 40.9–73.0)	17/41 (41.5; 26.3–57.9)	12/27 (44.4; 25.5–64.7)
40–49	434/914 (47.5; 44.2–50.8)	72/167 (43.1; 35.5–51.0)	112/203 (55.2; 48.1–62.1)	90/195 (46.2; 39.0–53.4)	90/202 (44.6; 37.6–51.7)	15/35 (42.9; 26.3–60.6)	15/31 (48.4; 30.2–66.9)	19/46 (41.3; 27.0–56.8)	21/35 (60.0; 42.1–76.1)
50–59	386/993 (38.9; 35.8–42.0)	84/203 (41.4; 34.5–48.5)	89/211 (42.2; 35.4–49.2)	103/244 (42.2; 35.9–48.7)	62/198 (31.3; 24.9–38.3)	18/40 (45.0; 29.3–61.5)	12/40 (30.0; 16.6–46.5)	8/24 (33.3; 15.6–55.3)	10/33 (30.3; 15.6–48.7)
60–69	236/781 (30.2; 27.0–33.6)	61/169 (36.1; 28.9–43.8)	60/198 (30.3; 24.0–37.2)	58/158 (36.7; 29.2–44.7)	23/128 (18.0; 11.7–25.7)	6/37 (16.2; 6.2–32.0)	11/48 (22.9; 12.0–37.3)	8/20 (40.0; 19.1–63.9)	9/23 (39.1; 19.7–61.5)
70–89	69/268 (25.7; 20.6–31.4)	10/45 (22.2; 11.2–37.1)	21/61 (34.4; 47.0–47.7)	20/61 (32.8; 21.3–46.0)	5/60 (10.0; 3.3–21.8)	7/22 (31.8; 13.9–54.9)	4/17 (23.5; 6.8–49.9)	1/7 (14.3; 0.4–57.9)	1/5 (20.0; 0.5–71.6)
Sex									
Male	1270/2876 (44.2; 42.3–46.0)	269/561 (48.0; 43.7–52.2)	320/667 (48.0; 44.1–51.8)	303/670 (45.2; 41.1–49.1)	208/574 (36.2; 32.3–44.1)	44/115 (38.2; 29.4–47.8)	43/112 (38.4; 29.4–48.1)	45/92 (48.9; 38.3–59.6)	38/85 (44.7; 33.9–55.9)
Female	1105/2263 (48.8; 46.8–50.9)	244/474 (51.5; 46.9–56.1)	291/559 (52.1; 47.8–56.3)	257/475 (54.1; 49.5–58.7)	160/408 (39.2; 34.5–44.1)	44/95 (46.3; 36.0–56.9)	38/91 (41.8; 31.5–52.6)	35/82 (42.7; 31.8–54.1)	36/79 (45.6; 34.3–57.2)

Table 6. Crude SARS-CoV-2 nucleocapsid antibody seroprevalence among Australian blood donors, by jurisdiction, age group and sex, 23 August – 2 September 2022 (Round 3)

	Overall n/N (%; 95% CI)	Victoria n/N (%; 95% CI)	NSW n/N (%; 95% CI)	Queensland n/N (%; 95% CI)	WA n/N (%; 95% CI)	SA n/N (%; 95% CI)	Tasmania n/N (%; 95% CI)	NT n/N (%; 95% CI)	ACT n/N (%; 95% CI)
Overall	3265/5005 (65.2; 63.9–66.5)	740/1105 (67.0; 64.1–69.7)	797/1185 (67.3; 64.5–69.9)	633/960 (65.9; 62.9–68.9)	614/996 (61.7; 58.6–64.6)	130/206 (63.1; 56.3–69.4)	112/202 (55.5; 48.5–62.2)	131/186 (70.4; 63.5–76.6)	108/165 (65.5; 57.9–72.3)
Age group (years)									
18–29	726/911 (79.7; 77.0–82.2)	182/227 (80.2; 74.5–84.9)	210/248 (84.7; 79.6–88.7)	132/173 (76.3; 69.4–82.1)	102/136 (75.0; 67.0–81.6)	19/23 (82.6; 61.6–93.4)	21/30 (70.0; 51.5–83.7)	33/39 (84.6; 69.6–93.0)	27/35 (77.1; 60.4–88.2)
30–39	655/904 (72.5; 69.5–75.3)	133/184 (72.3; 65.4–78.3)	159/208 (76.4; 70.2–81.7)	120/166 (72.3; 65.0–78.6)	138/201 (68.7; 61.9–74.7)	26/36 (72.2; 55.5–84.4)	22/33 (66.7; 49.1–80.6)	38/47 (80.9; 67.0–89.8)	19/29 (65.5; 46.8–80.4)
40–49	662/970 (68.3; 65.3–71.1)	144/205 (70.2; 63.6–76.1)	155/220 (70.5; 64.1–76.1)	143/213 (67.1; 60.5–73.1)	134/201 (66.7; 59.9–72.8)	20/32 (62.5; 44.8–77.4)	20/30 (66.7; 48.2–81.1)	18/26 (69.2; 49.3–83.9)	28/43 (65.1; 49.8–77.8)
50–59	691/1097 (63.0; 60.1–65.8)	151/233 (64.8; 58.5–70.7)	156/250 (62.4; 56.2–68.2)	151/237 (63.7; 57.4–69.6)	134/216 (62.0; 55.4–68.3)	33/52 (63.5; 49.6–75.4)	20/41 (48.8; 34.0–63.8)	24/38 (63.2; 46.9–76.9)	22/30 (73.3; 54.9–86.1)
60–69	413/839 (49.2; 45.9–52.6)	100/203 (49.3; 42.4–56.1)	84/180 (46.7; 39.5–54.0)	74/145 (51.0; 42.9–59.1)	80/168 (47.6; 40.2–55.2)	26/45 (57.8; 43.0–71.3)	24/48 (50.0; 36.1–63.9)	16/32 (50.0; 33.2–66.8)	9/18 (50.0; 28.3–71.7)
70–89	118/284 (41.6; 36.0–47.4)	30/53 (56.6; 43.1–69.2)	33/79 (41.8; 31.4–52.9)	13/26 (50.0; 31.7–68.4)	26/74 (35.1; 25.1–46.6)	6/18 (33.3; 15.7–57.3)	5/20 (25.0; 10.8–48.0)	2/74 (50.0; 12.2–87.8)	3/10 (50.0; 9.9–62.6)
Sex									
Male	1802/2796 (64.5; 62.7–66.2)	409/625 (65.4; 61.6–69.1)	449/682 (65.8; 62.2–69.3)	354/534 (66.3; 62.2–70.2)	335/561 (59.7; 55.6–63.7)	68/105 (64.8; 55.1–73.3)	63/110 (57.3; 47.8–66.2)	69/95 (72.6; 62.8–80.7)	55/84 (65.5; 54.7–74.9)
Female	1463/2209 (66.2; 64.2–68.2)	331/480 (69.0; 64.7–72.9)	348/503 (69.2; 65.0–73.1)	279/426 (65.5; 60.8–69.9)	279/435 (64.1; 59.5–68.5)	62/101 (61.4; 51.5–70.4)	49/92 (53.3; 43.0–63.2)	62/91 (68.1; 57.8–76.9)	53/81 (65.4; 54.4–75.0)

3. Demographic characteristics of study populations

Figure S1. Distribution of demographic characteristics among samples collected by round, compared with the broader blood donor population¹ and Estimated Residential Population (ERP),² by age group (A) and sex (B) for each jurisdiction

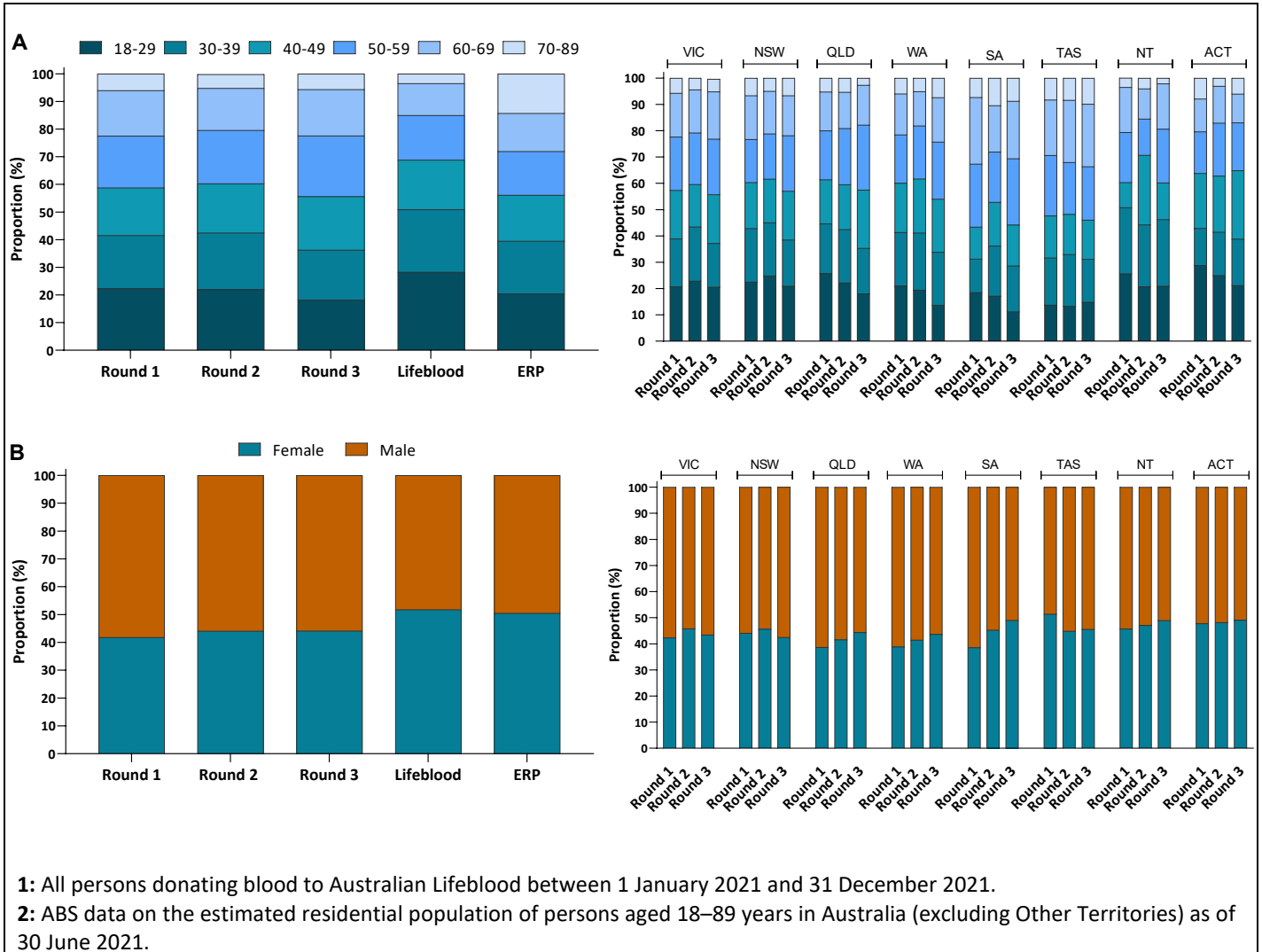
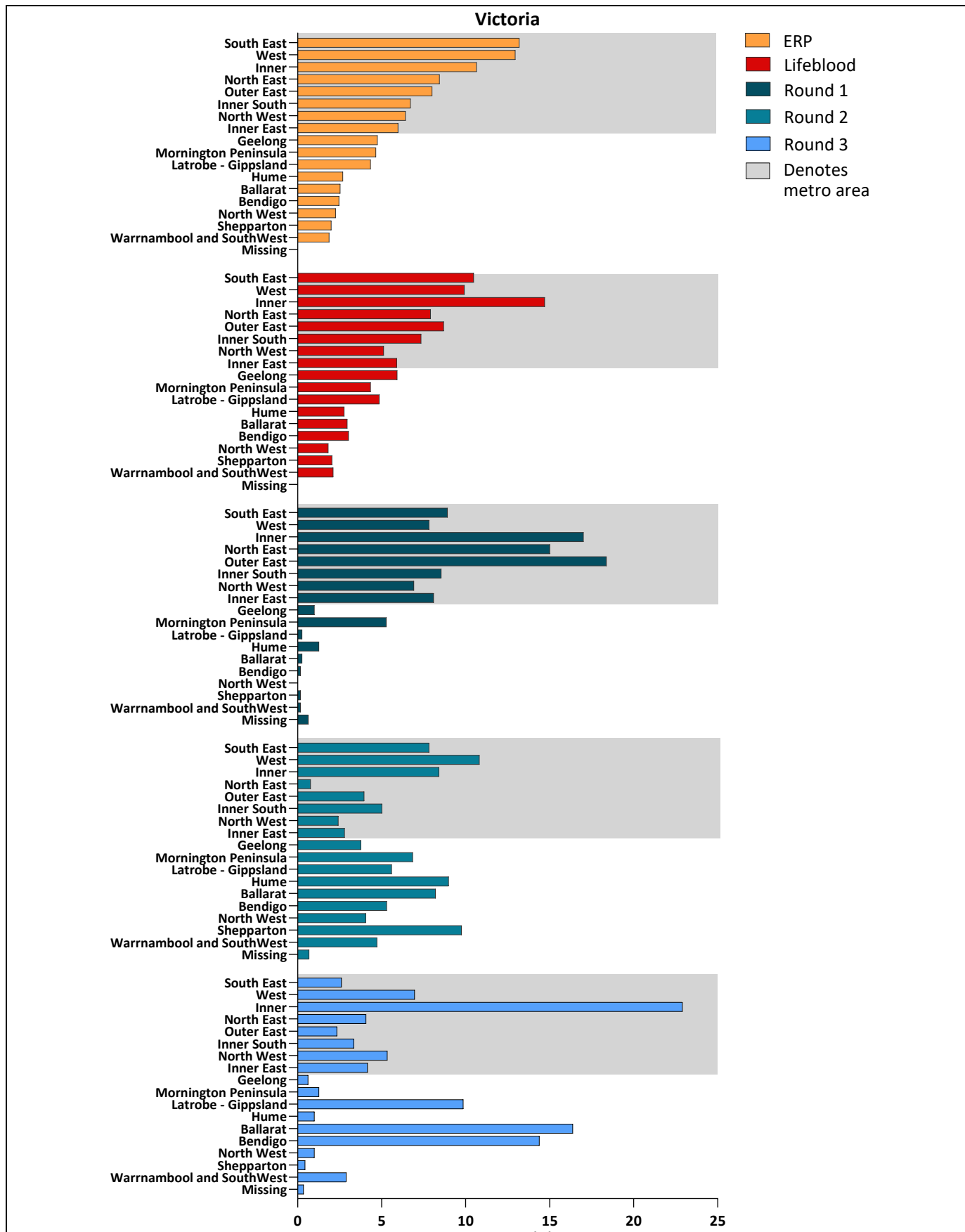


Figure S2. Distribution of demographic characteristics by Statistical Area Level 4 (SA4) in Victoria compared with the broader blood donor population¹ and Estimated Residential Population (ERP)²



1: All people donating blood to Australian Lifeblood between 1 January 2021 and 31 December 2021.

2: ABS data on the estimated residential population of persons aged 18–89 years in Australia (excluding Other Territories) as of 30 June 2021.

Figure S3. Distribution of demographic characteristics by Statistical Area Level 4 (SA4) in New South Wales compared with the broader blood donor population¹ and Estimated Residential Population (ERP)²

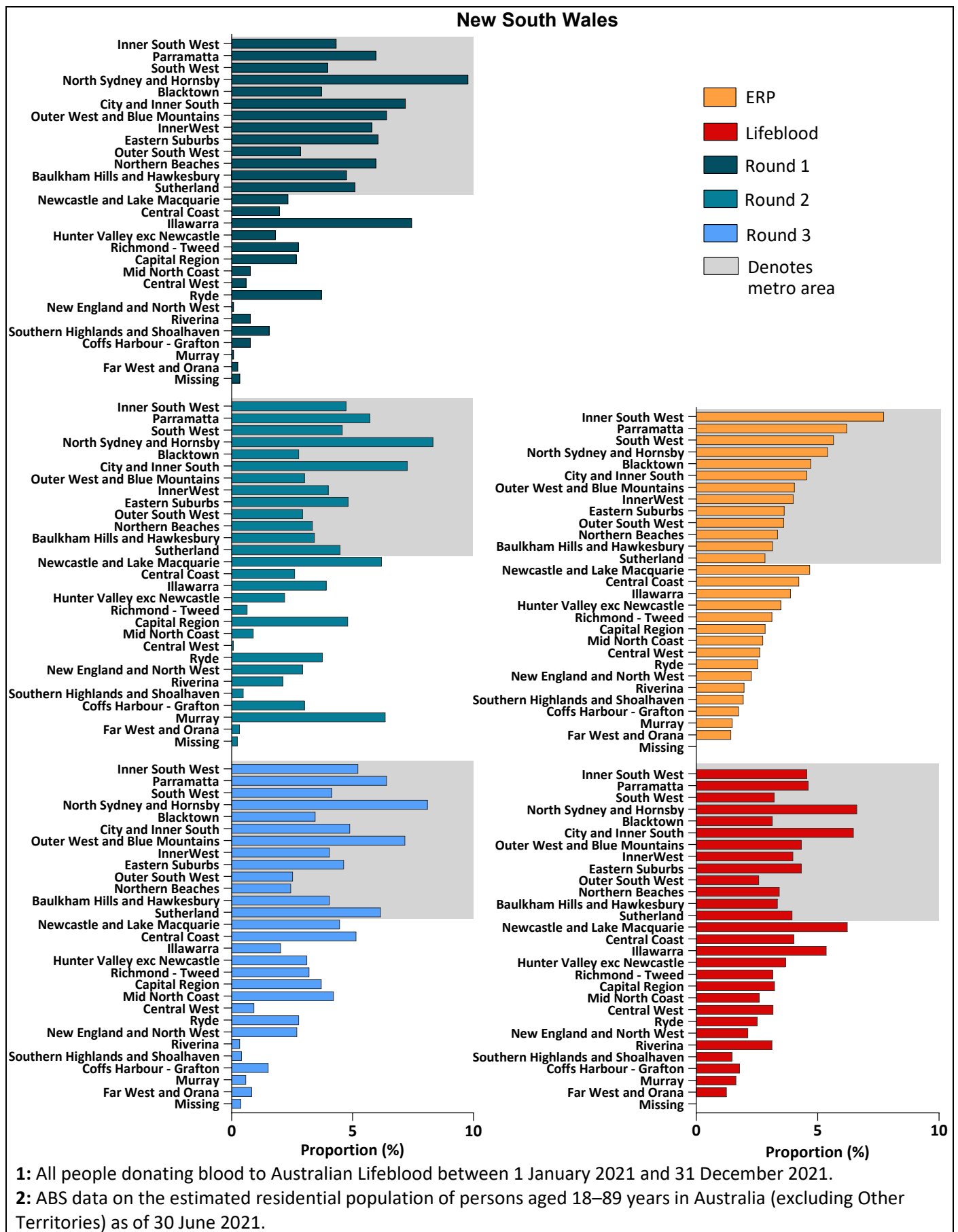
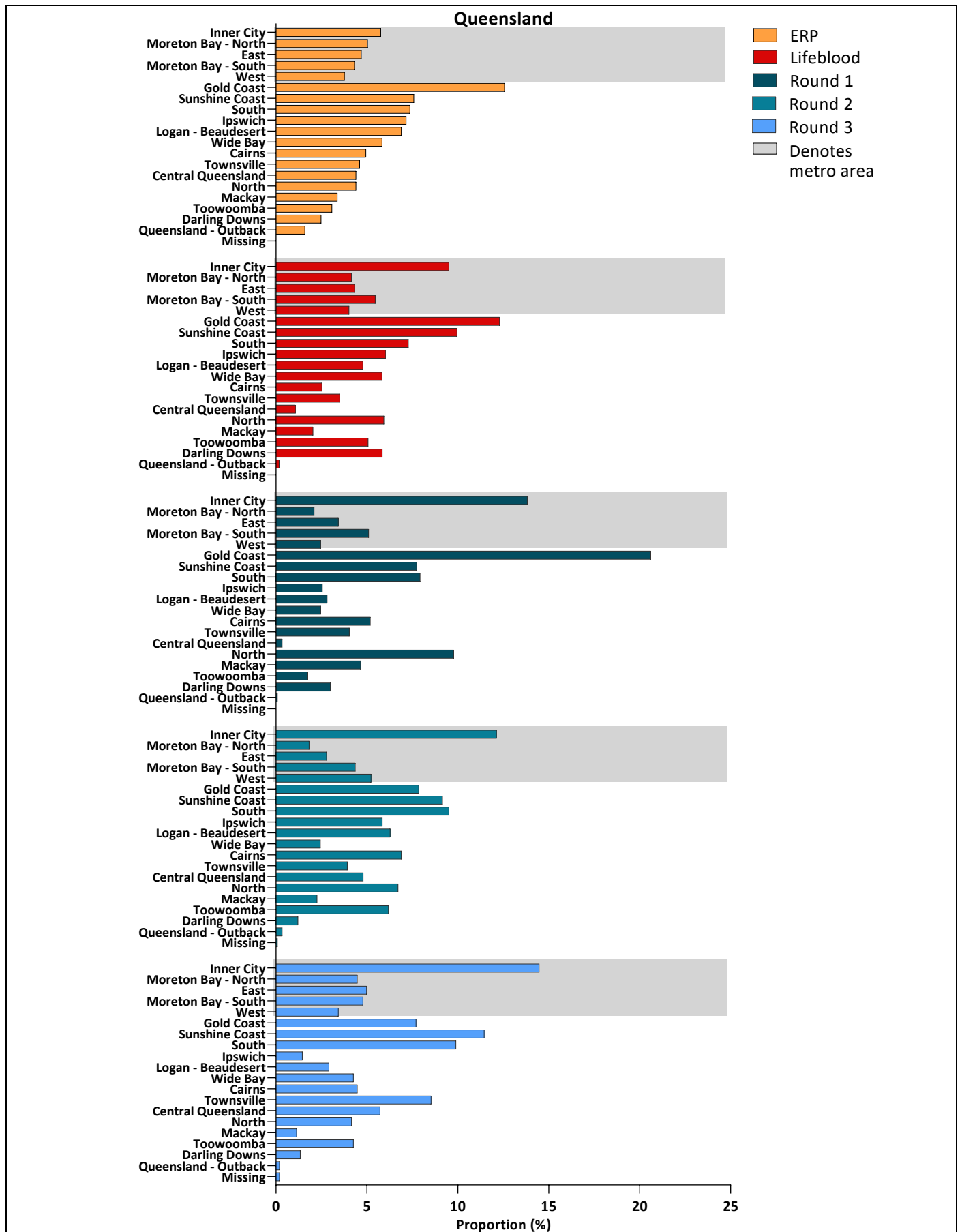


Figure S4. Distribution of demographic characteristics by Statistical Area Level 4 (SA4) in Queensland compared with the broader blood donor population¹ and Estimated Residential Population (ERP)²



1: All people donating blood to Australian Lifeblood between 1 January 2021 and 31 December 2021.

2: ABS data on the estimated residential population of persons aged 18–89 years in Australia (excluding Other Territories) as of 30 June 2021.

Figure S5. Distribution of demographic characteristics by Statistical Area Level 4 (SA4) in Western Australia compared with the broader blood donor population¹ and Estimated Residential Population (ERP)²

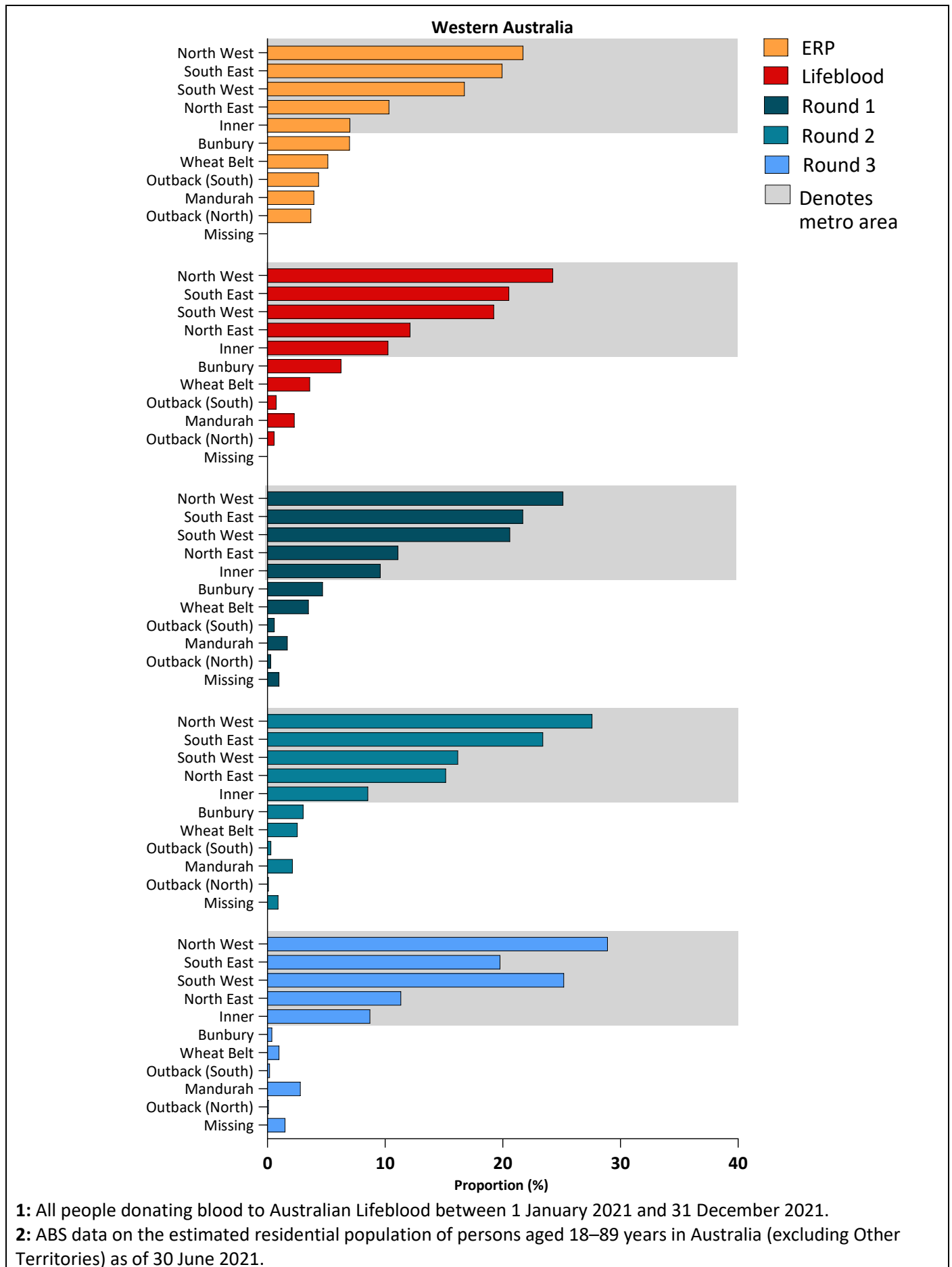
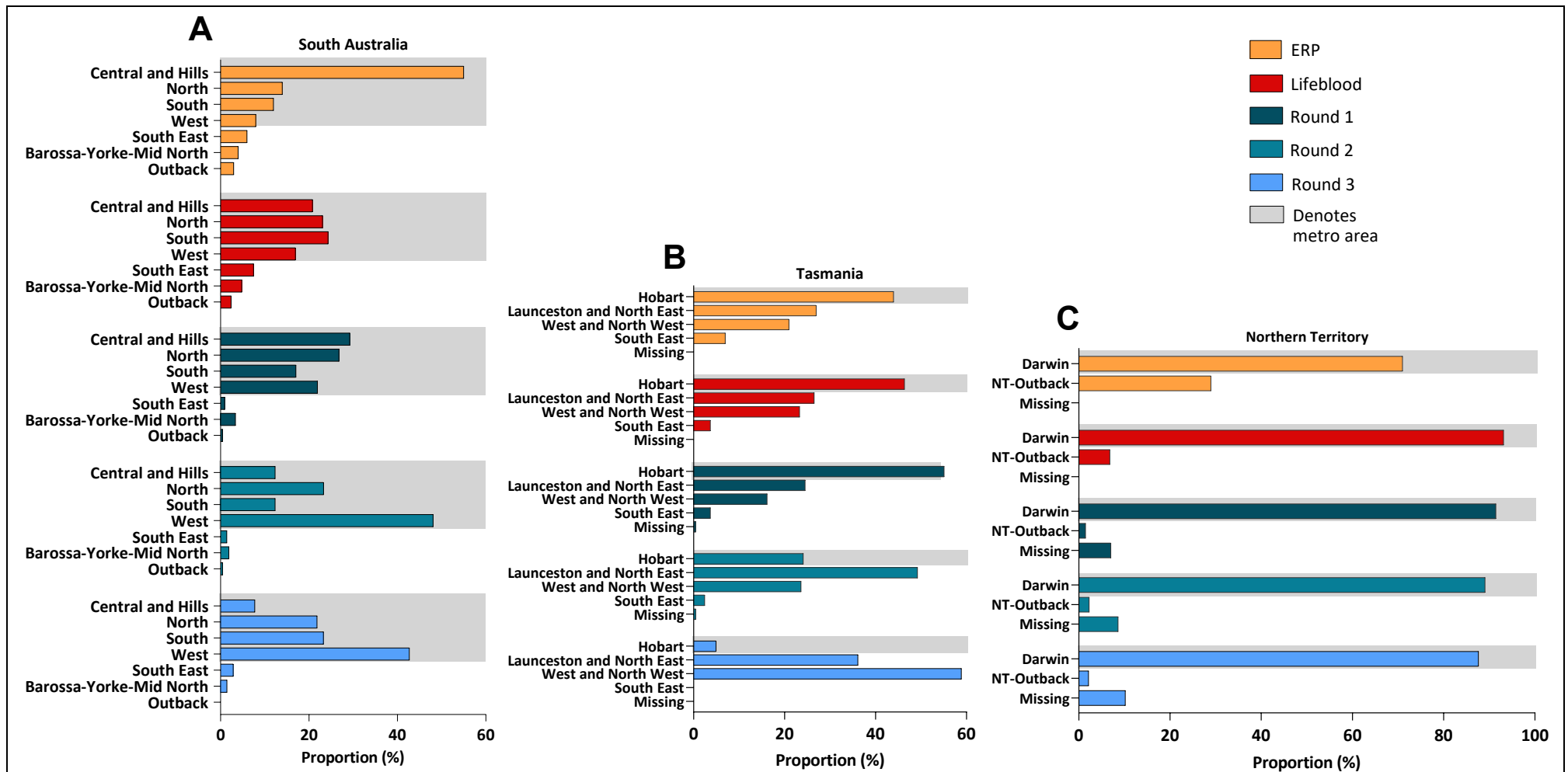


Figure S6. Distribution of demographic characteristics by Statistical Area Level 4 (SA4) in South Australia (A), Tasmania (B) and the Northern Territory (C) compared with the broader blood donor population¹ and Estimated Residential Population (ERP)²



1: All people donating blood to Australian Lifeblood between 1 January 2021 and 31 December 2021.

2: ABS data on the estimated residential population of persons aged 18–89 years in Australia (excluding Other Territories) as of 30 June 2021.

The Australian Capital Territory is made up of a single SA4, hence not presented.